



master.of.code
GLOBAL

Your Ultimate Conversation AI Platform Checklist

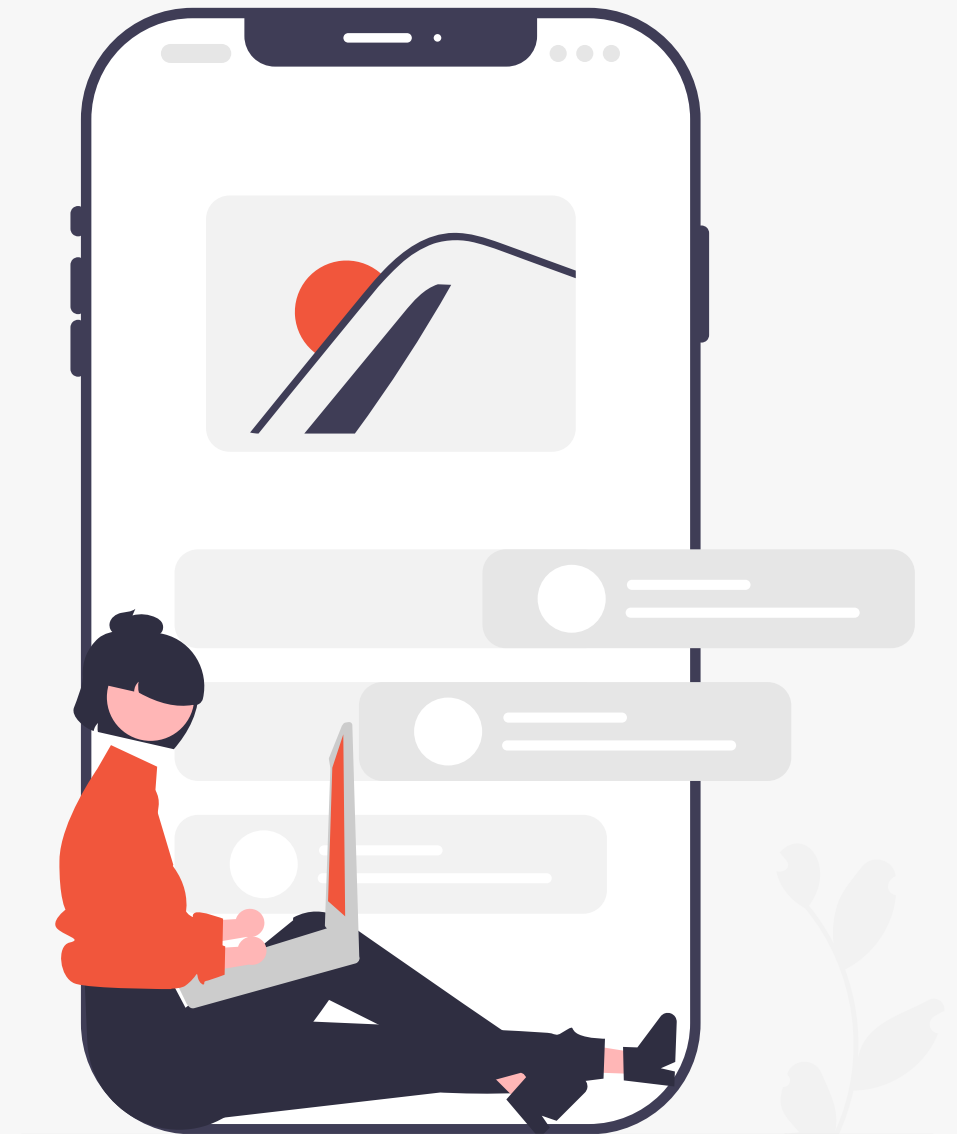
**Choose wisely to avoid hidden costs
and common mistakes**

Ready to begin the journey?



Is this platform developer-friendly?

- Pre-built integrations (# of integrations)
- Pre-built chatbot components
- Bot marketplace and/or template library
- Depth of developer documentation
- Developer community program
- Academy certification program
- Open API
 - Well-documented
 - Fully-secured RESTful API
 - % of feature coverage
- Integrated developer toolkit
- Integration framework with IDE support
- Platform extensions, translations, and transformations
- Customizable environment configuration
- Robust testing functionality and testing metrics
- Range of options for ingesting and exporting data from the platform





As a Solution Architect, will this product meet the needs of our enterprise customers?

Enterprise-level architecture, operations, and scalability

- Ability to deliver across multiple geographies
- Ability to scale up to meet high traffic demand
- Open-source architecture
- Customizable infrastructure
- Modular, extensible architecture
- Powerful built-in and custom integrations
- Containerized microservices architecture

Omnichannel (# of channels) & multi-channel deployment

- Includes voice
- Endpoints for custom channels

Multilingual support (# of languages)

Security & Compliance

- **Management console supporting administrative functions**
 - Version management
 - Built-in logging to access application and system logs
 - Manage platform access and user accounts and security
 - Single sign-on (SSO) experience
 - Authorization with user-level access defined
- **Data hosting**
 - Private cloud, on-premise
- **Data management**
 - Data security package
 - End-to-end encryption
 - Chat history storage control options
- **Compliance**
 - ISO Certification(s)
 - SOC2 Certification
 - HIPAA
 - GDPR-compliant



As a Conversation Designer, does the platform offer industry-leading design tools?

Interactive flow builder visualizations

Low or no-code builder and graphical design tooling

Drag and drop interfaces

Pre-built template library

Automated testing capabilities

Analytics and Reporting

- **Analytics on automation performance**
 - Out-of-the-box reporting dashboards
 - Custom dashboards
- **Visualization of users, flow, and interaction metrics**
- **Pre-built integrations with external data and visualization tools**
- **Data export to custom dashboards**

AI & ML

- **State-of-the-art BERT-based (NLU) models**
- **NLU engine agnostic**
 - Compatible with third-party NLU engines
 - Out-of-the-box integrations with major NLU engines
- **Speech recognition and speech synthesis models**
- **Intent management tools**
 - Intent and entity definition
 - Intent analyzer
 - Managing large intent models
 - Intent training tools
- **Sentiment analysis capabilities**
- **Level of control with user training data and models**



Excellent
Client Feedback

81_{NPS} **9.2**_{CSAT}



400+

Projects delivered

Founded in
2004

250+

Masters

5

Offices
Worldwide

USA
Seattle
CANADA
Toronto, Winnipeg
EUROPE
Poland, Ukraine



ISO 27001

Information security,
cybersecurity and privacy
protection

REVIEWED ON
Clutch



4,7/5 Rating

1+ **Billion**
Users

engaged by our chatbots



**Microsoft
Conversational AI**

Partner Advisory
Council



**Certified
Delivery Partner**

Certified
Delivery Partner



**Official
Partner**

Conversation
Design Festival



**Consulting
Partner**

Partner
Network





master.of.code
GLOBAL

**Let us help you connect your brand with
customers where they communicate today.
Chat or voice**

[Contact our team](#)

